

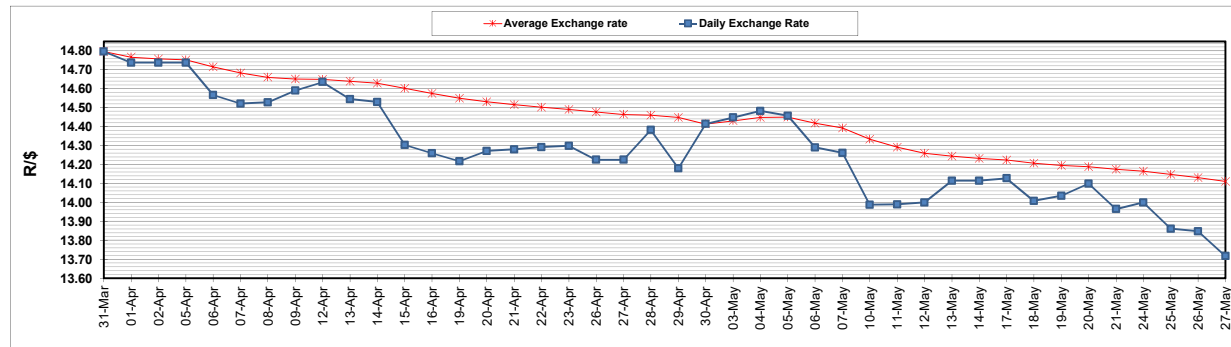
	PETROL 95 ULP	PETROL 93 ULP & LRP	DIESEL 0.05%	DIESEL 0.005%	ILL. PAR.
GAUTENG PUMP PRICE (SA c/l) AS FROM 05/05/2021	1,723.000	1,701.000	-	-	-
WHOLESALE PRICE (SA c/l) AS FROM 05/05/2021	-	-	1,446.620	1,450.020	857.488
SINGLE NATIONAL MAXIMUM RETAIL PRICE	-	-	-	-	1,076.000
BASIC FUEL PRICE - 27/05/2021 (SA c/l)	699.633	689.830	672.139	676.673	651.431
PRESS RELEASE CONTRIBUTION TO BFP 05/05/2021 - 27/05/2021 (SA c/l)	727.170	715.170	659.630	663.030	644.128
UNIT OVER/(UNDER) RECOVERY - 27/05/2021 (SA c/l)	27.537	25.340	(12.509)	(13.643)	(7.303)
AVERAGE BASIC FUEL PRICE 30/04/2021 - 27/05/2021	717.666	707.103	683.481	687.765	668.285
AVERAGE UNIT OVER/(UNDER) RECOVERY 30/04/2021 - 27/05/2021	10.854	9.417	(19.201)	(20.235)	(20.707)

ANALYSIS MOVEMENT OF AVERAGE OVER/(UNDER) RECOVERY

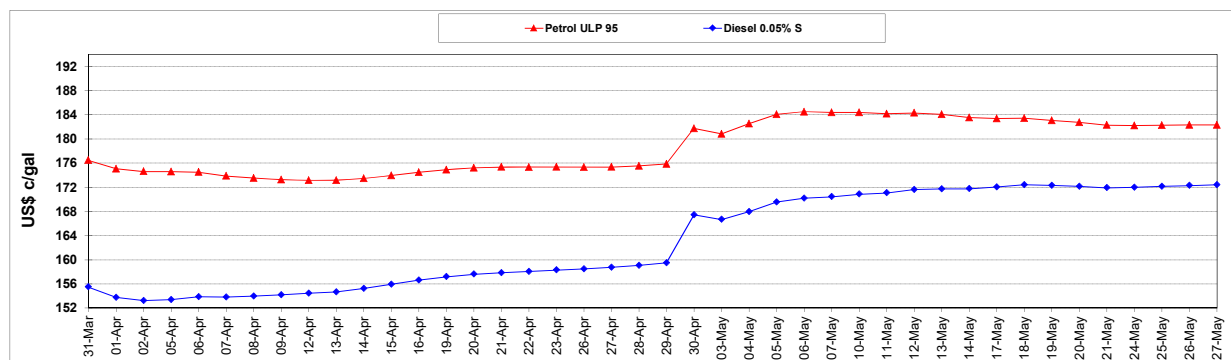
	PETROL 95	PETROL 93	DIESEL 0.05%	DIESEL 0.005%	ILL. PAR.
- MOVEMENT IN INTERNATIONAL PRODUCT PRICES	(6.285)	(7.470)	(35.524)	(36.660)	(36.667)
- MOVEMENT IN EXCHANGE RATE	17.139	16.887	16.323	16.425	15.960
AVERAGE UNIT OVER/(UNDER) RECOVERY 30/04/2021 - 27/05/2021	10.854	9.417	(19.201)	(20.235)	(20.707)

R/\$ EXCHANGE RATE - (R/\$13.7170- 27/05/2021)

EXCHANGE RATE USED IN BASIC FUEL PRICE



INTERNATIONAL PRODUCT PRICES OF BASKET USED IN BASIC FUEL PRICE



BASIC FUEL PRICE IN SA CENTS PER LITRE

